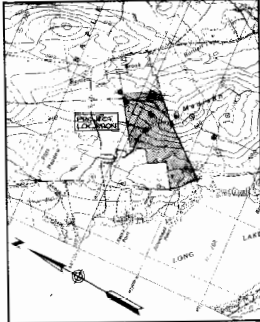


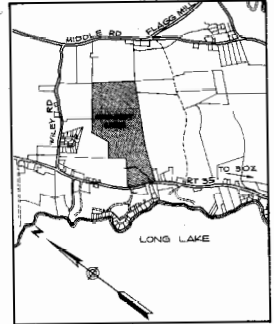
MADISON HEIGHTS SUBDIVISION FINAL PLAN SUBMISSION



VICINITY MAP

PREPARED FOR
MADISON HEIGHTS ASSOCIATES,
INC.
AND
THE TOWN OF NAPLES
BY
DELUCA HOFFMAN ASSOCIATES
1266 CONGRESS STREET
PORTLAND, MAINE 04102

JANUARY 19, 1988



LOCATION MAP

APPROVED BY THE TOWN OF
NAPLES PLANNING BOARD

Roger A. [Signature]

[Signature]

[Signature]

DATE: 1/19/88

State of Maine Certificate of
Registration of Deeds
Book 1112, Page 111
1 of 10 sheets

TRANZON AUCTION PROPERTIES' DISCLAIMER

The information provided in the attached document is being provided for convenience purposes only and may not include complete information as there may be additional documents including, but not limited to amendments, updated data, supplemental docs, etc. This information was derived from sources believed correct, but is not guaranteed. Potential bidders shall rely entirely on their own information and judgment. Property is being sold on an "AS IS, WHERE IS" basis.

